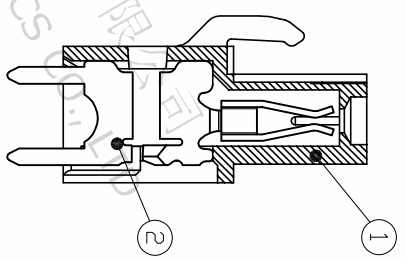
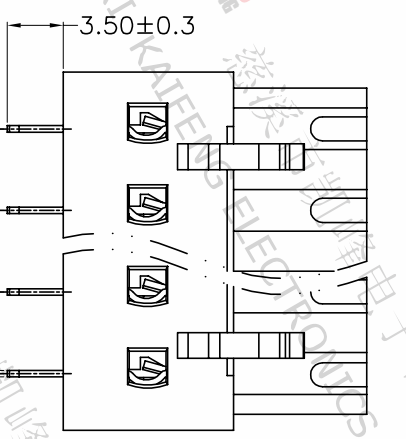
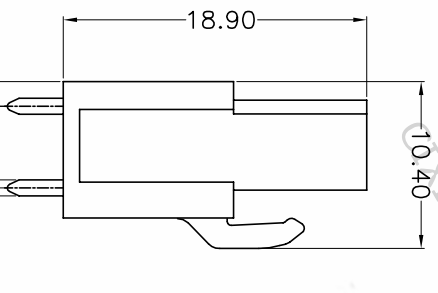
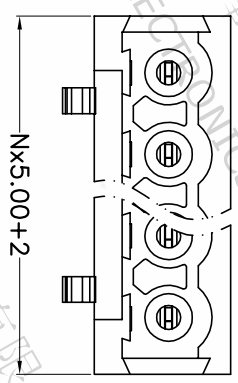


REV.	DESCRIPTION	DATE	DRAFTER	APPROVER
A1	DWG.REL	2020.5.20	ZHANG	JIN



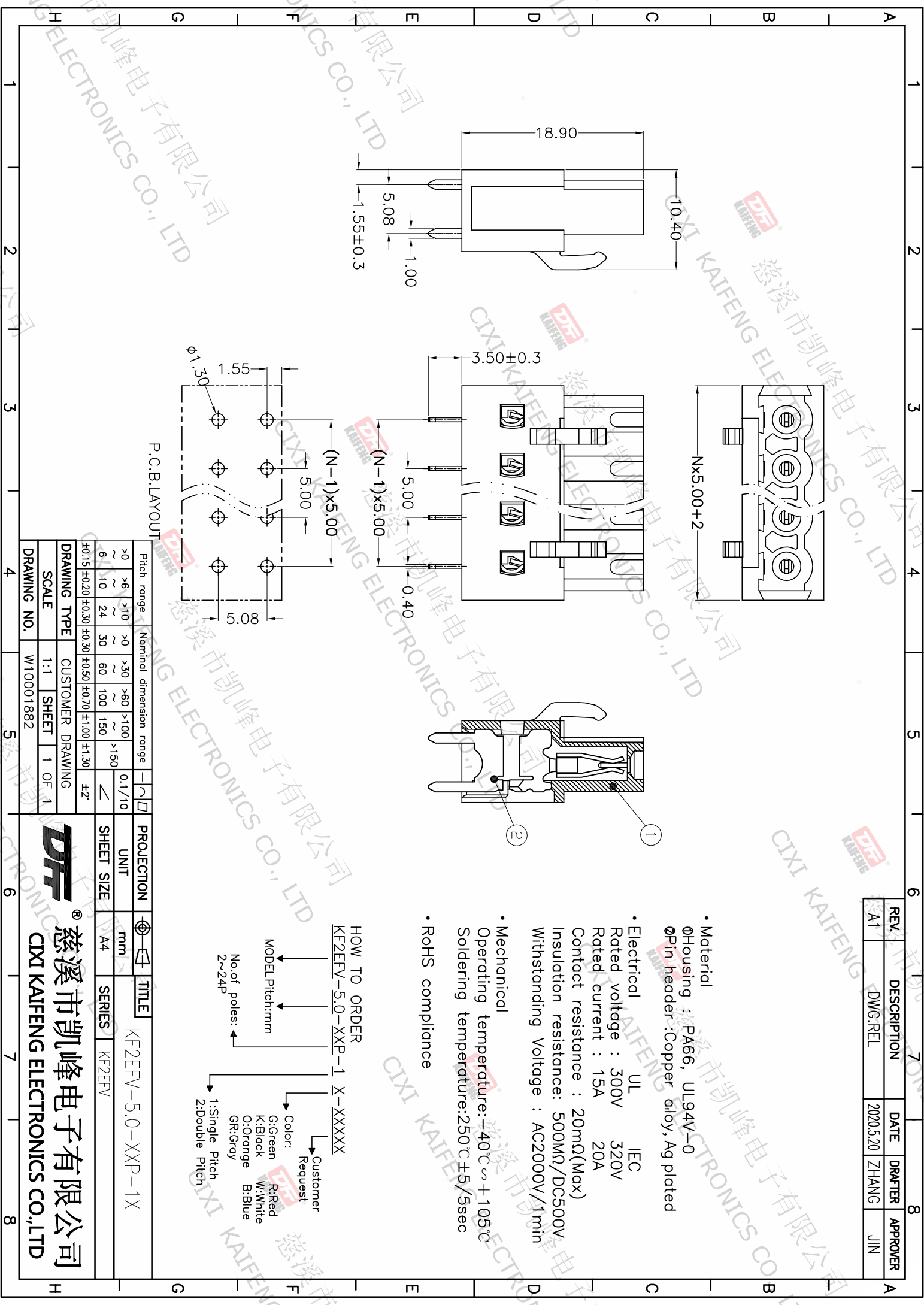
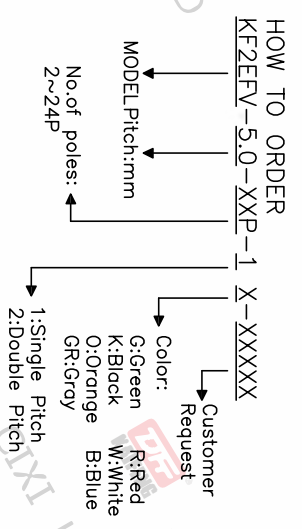
P.C.B.LAYOUT

Pitch range	Nominal dimension range	PROJECTION
>0	>0	0.1/10
~6	~30	≤
~10	~60	≤
~24	~100	≤
~30	~150	≤
±0.15	±0.30	±2°
±0.20	±0.50	
±0.30	±0.70	
	±1.00	
	±1.30	

DRAWING TYPE	CUSTOMER DRAWING
SCALE	1:1
SHEET	1 OF 1
DRAWING NO.	W10001882

PROJECTION	UNIT	TITLE
mm	mm	KF2EFV-5.0-XXP-1X
A4	A4	SERIES KF2EFV

- Material
 ØHousing : PA66, UL94V-0
 ØPin header : Copper alloy, Ag plated
- Electrical
 UL IEC
 Rated voltage : 300V 320V
 Rated current : 15A 20A
 Contact resistance : 20mΩ(Max)
 Insulation resistance: 500MΩ/DC500V
 Withstanding Voltage : AC2000V/1min
- Mechanical
 Operating temperature:-40°C ~ +105°C
 Soldering temperature:250°C±5/5sec
- RoHS compliance



慈溪市凯峰电子有限公司
 CIXI KAIFENG ELECTRONICS CO., LTD

DF
 慈溪市凯峰电子有限公司
 CIXI KAIFENG ELECTRONICS CO.,LTD