

REV.	DESCRIPTION	DATE	DRAFTER	APPROVER
A1	DWG.REL	2020.6.08	ZHANG	JIN

- Material
  - ①Screw: M2.0 steel, Zinc plated, \* slot type
  - ②Housing : PA66, UL94V-0
  - ③Contact : Copper alloy, Tin plated
  - ④Clamp : Copper alloy, Ni plated
  - ⑤Cover : PA66, UL94V-0

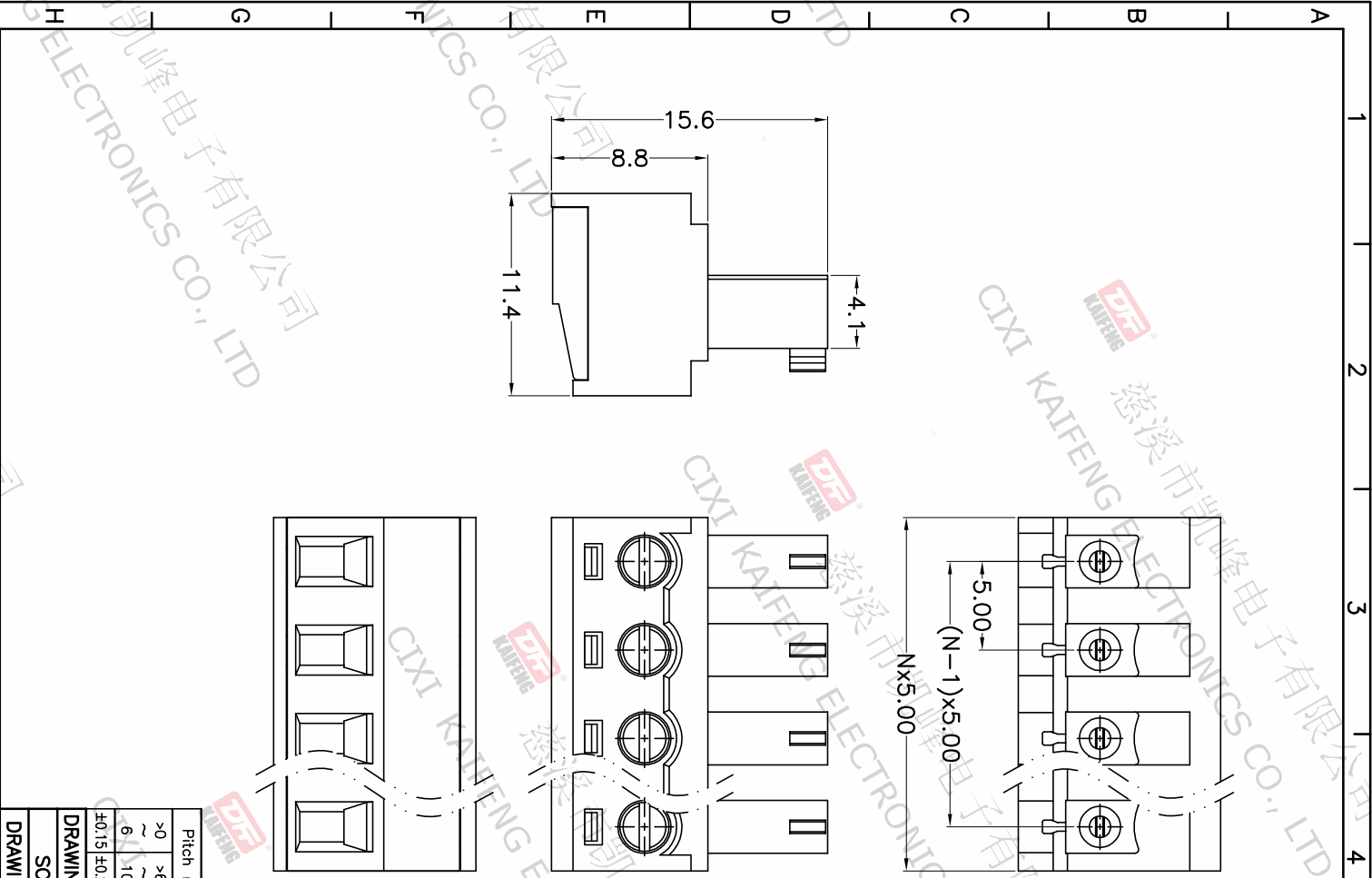
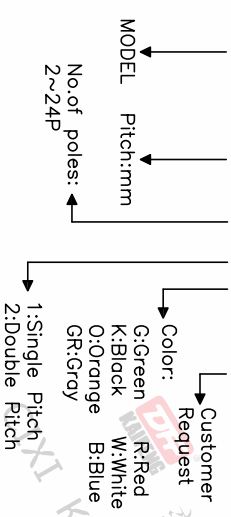
- Electrical
  - UL IEC
  - Rated voltage : 300V 320V
  - Rated current : 8A 7A
  - Contact resistance : 20mΩ(Max)
  - Insulation resistance: 500MΩ/DC500V
  - Withstanding Voltage : AC2000V/1min
  - Wire range: 28-16AWG 0.5-1.5mm<sup>2</sup>

- Mechanical
  - Operating temperature: -40°C ~ +105°C
  - Soldering temperature: 250°C ±5 / 5sec
  - Torque: 0.2N.m (1.77Lb.in)
  - Strip length: 5-6mm

• RoHS compliance

HOW TO ORDER

KF2EDG-Y-5.0-XXP-1 X-XXXXX



Pitch range	Nominal dimension range	PROJECTION
>0	>0	0.1/10
~6	>30	□
~10	>60	□
~24	>100	□
±0.15	>150	□
±0.20	±0.30	±2°
±0.30	±0.50	
±0.70	±1.00	
±1.30	±1.30	

DRAWING TYPE	CUSTOMER DRAWING	SCALE	SHEET	1 OF 1
DRAWING NO.	W10000882	1:1	SHEET	1 OF 1

**DF** 慈溪市凯峰电子有限公司  
CIXI KAIFENG ELECTRONICS CO.,LTD