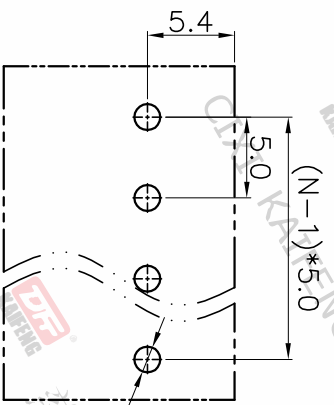
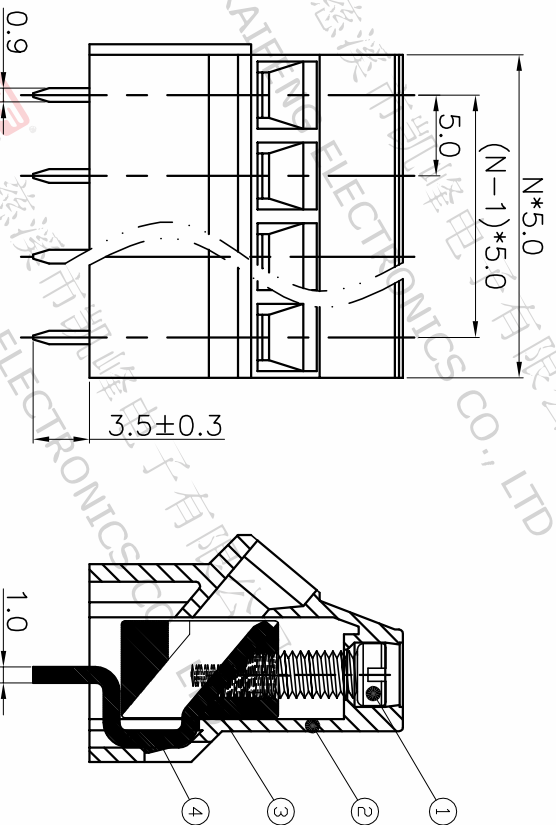
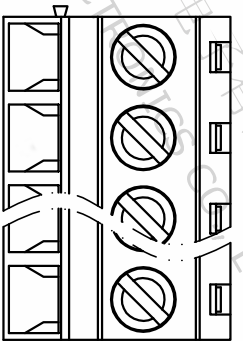


REV.	DESCRIPTION	DATE	DRAFTER	APPROVER
A1	DWG.REL	2020.05.18	DENG	JIN



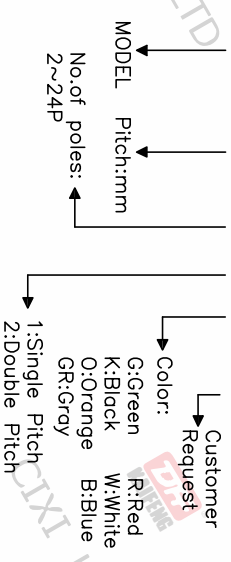
P.C.B. LAYOUT

Pitch range	Nominal dimension range	PROJECTION	UNIT
>0	>30	0.1/10	mm
~6	~60		
~10	~100		
~24	~150		
±0.15	±0.30		±2°

DRAWING TYPE	CUSTOMER DRAWING
SCALE	1:1
DRAWING NO.	W15000342

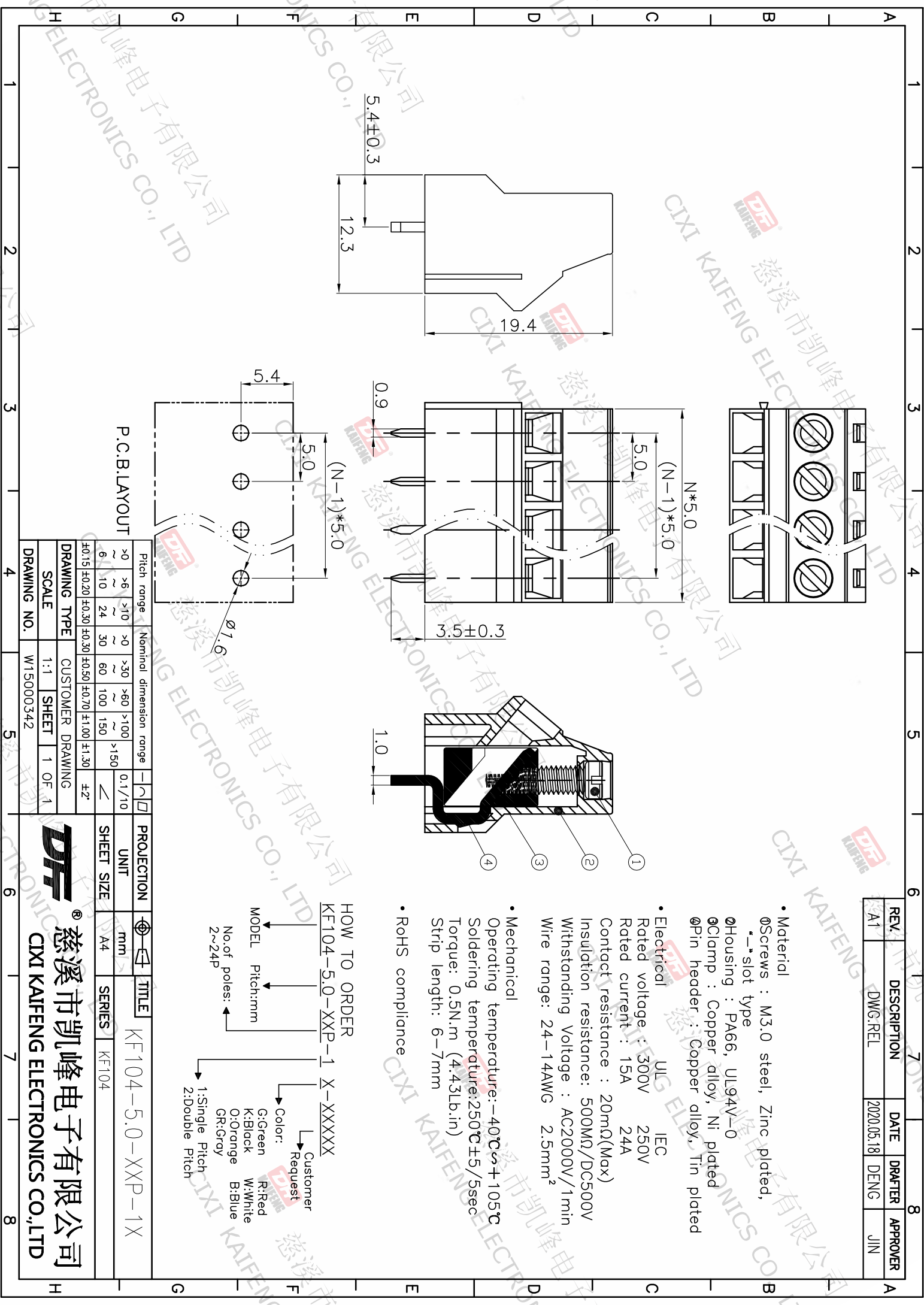
MODEL	TITLE
KF104-5.0-XXP-1	KF104-5.0-XXP-1X
SHEET SIZE	SERIES
A4	KF104

HOW TO ORDER



- Material
  - ①Screws : M3.0 steel, Zinc plated,
  - ② slot type
  - ③Housing : PA66, UL94V-0
  - ④Clamp : Copper alloy, Ni plated
  - ⑤Pin header : Copper alloy, Tin plated
- Electrical
 

UL	IEC
Rated voltage : 300V	250V
Rated current : 15A	24A
Contact resistance : 20mΩ(Max)	
Insulation resistance: 500MΩ/DC500V	
Withstanding Voltage : AC2000V/1min	
Wire range: 24-14AWG	2.5mm <sup>2</sup>
- Mechanical
  - Operating temperature: -40°C~+105°C
  - Soldering temperature: 250°C±5/5sec
  - Torque: 0.5N.m (4.43Lb.in)
  - Strip length: 6-7mm
- RoHS compliance



CIXI KAIFENG ELECTRONICS CO., LTD

慈溪市凯峰电子有限公司  
 CIXI KAIFENG ELECTRONICS CO.,LTD